



CHINA
2000
FINE
ART

Unusually Large Cinnabar Lacquer Brush 堆朱軸大筆

Ming dynasty, early 16th century

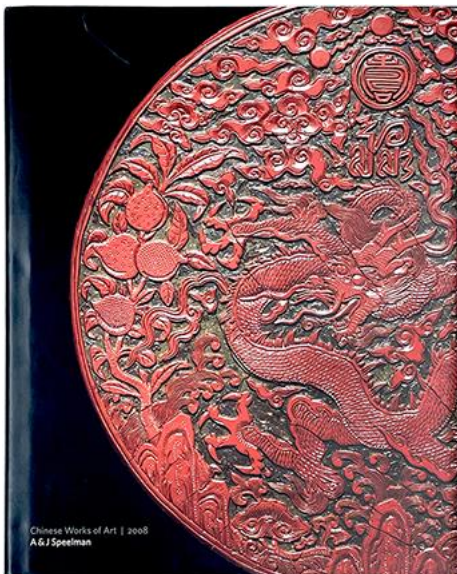
9.75 (L) 1.5 (dia.) in. Overall, 13 (L) in.

24.76 (L) 3.81 (dia.) cm. Overall, 33 (L) cm

Illustrated: *Chinese Works of Art*, London: A & J Speelman, 2008, plate 50.



The cylindrical handle of the brush is created in two shades of red lacquer, a bright upper surface in relief and a darker ground. The handle is hollow fitted with a thick brush at one end and a 'shou' character symbolizing longevity carved on the other sealed end. The surface of the handle is intricately carved with a continuous scene depicting two scholars and three attendants walking along a path with water on either side. The scene is set amidst rocks and bushes, leading into a landscape of hills and trees with a pavilion in the distance. The scene evolves from bottom to top wrapping around the handle like viewing and unrolling a painting.





CHINA
2000
FINE
ART

