



CHINA
2000
FINE
ART

Zhu Qizhan (朱屺瞻, 1892-1996)

Landscape with Waterfall

1977

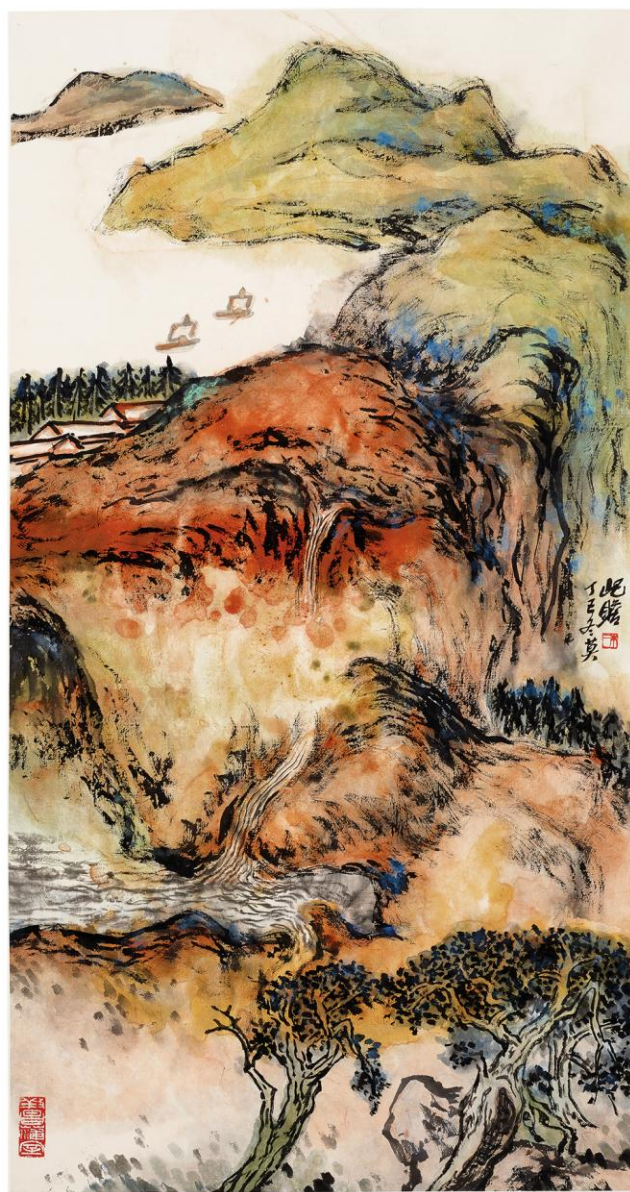
Ink and color on paper

Hanging scroll, 34 x 18 in. (86.3 x 45.7 cm)

Signed Qizhan with two seals: Zhu Er, Yang changpu shi

Published: 《朱屺瞻画集》 (Painting Collection of Zhu Qizhan), Shanghai: Shanghai People's Fine Arts Publishing House, 1980, Plate 60.

Exhibited and illustrated: *Braving the Frost*, New York: L.J. Wender Fine Chinese Painting, 1991, and published in the exhibition catalogue, plate 18



Inscription

丁巳冬莫。屺瞻。铃印：朱二、養菖蒲室

In the winter of Dingsi year (1977). Qizhan (signature)

Seal: Zhu Er, Yang changpu shi

Zhu Qizhan (朱屺瞻, 1892-1996), courtesy names Qizhai (起哉) and Erzhan Laomin (二瞻老民), was born into a wealthy merchant family with a fine collection of Chinese painting in Taicang, Jiangsu province. His traditional education included studying literature, painting, and calligraphy as a child, and in 1912 he entered the Shanghai Art Academy. Zhu studied Western oil painting in Japan, responding instinctively to the strong, sensuous use of color evident in the works of post-impressionist artists such as Cezanne, van Gogh and Matisse. At an early age, Zhu recognized that art was a universal language, cutting across cultural and political barriers, and existing at a level of consciousness where it could be used to challenge the complacency of one's own art. By appropriating the best elements of other artistic traditions, a grand new vision can arise. Zhu's works have been shown nationally and internationally in museums and galleries, like the British Museum, the Asian Art Museum of San Francisco, and the Hong Kong Museum of Art. In 1995, the Zhu Qizhan Museum was established as an ultimate tribute to the artist from the Chinese government in Shanghai. Zhu Qizhan died on April 10, 1996 at the age of 105.